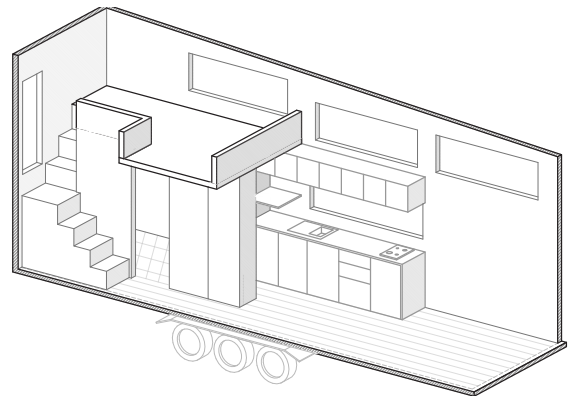
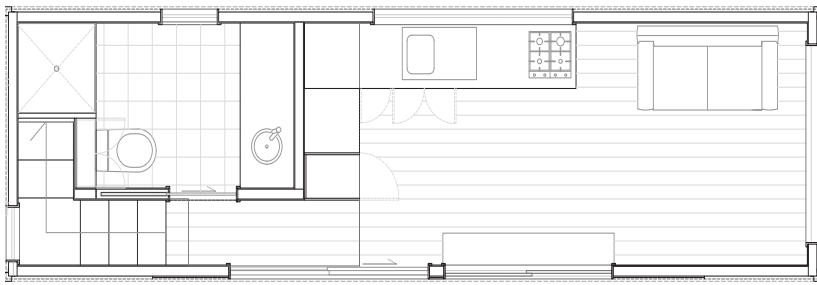


The Mountain Ash



Private loft, lots of storage, large bathroom and open plan living.

Specifications

8.4m x 2.4m Trailer

Overall:
10.1m x 2.5m x 4.3m

Bedroom

Loft bedroom, space for king size mattress, staircase to loft, storage. Sofa bed optional.

Sleeps 1 - 4

Bathroom

Large bathroom, Full size shower, tiled bathroom floor, ceramic basin, storage cupboards & space for washing machine.

Kitchen

2.8m timber benchtop, 4 burner cooktop, 9 function oven, space for fridge, rangehood, heaps of storage!

Construction

4.5 tonne tri-axle trailer lightweight trucore steel frame. sustainable, recycled insulation, underfloor insulation, exterior cladding options colorbond roofing, aluminium windows, 2 sliding doors

Living

Crafted staircase with storage, room to mount TV, open plan

Utilities

240 volt wired, LED downlights (4) pendant lights (3) 2.5kw reverse cycle heating and cooling, continuous hot water, smoke detector